



GAT MONTHLY MEMBERSHIP PROGRESS REPORT

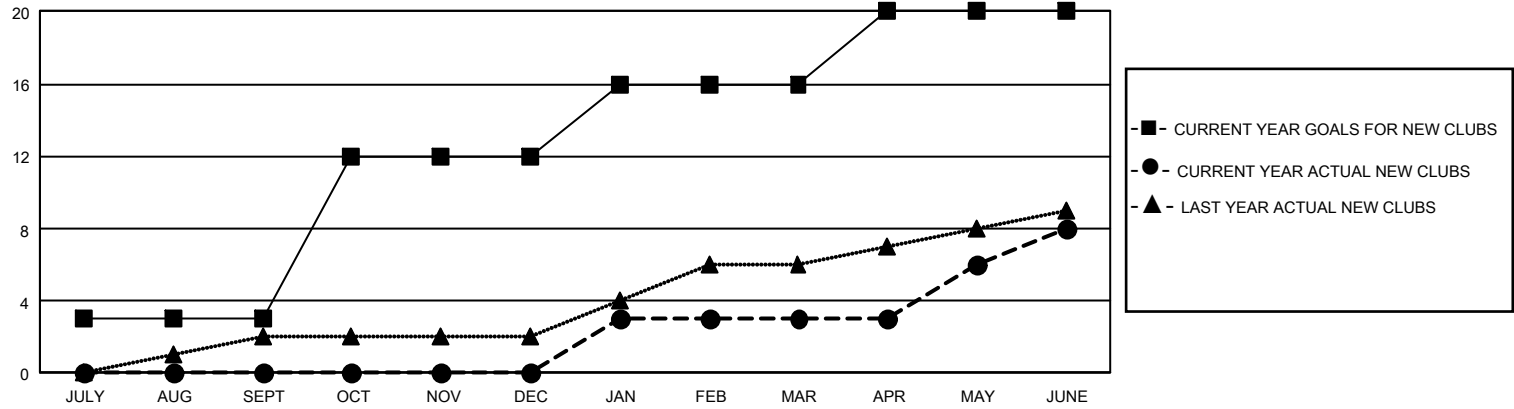
Results as of: 6/30/2025

GMT Constitutional Area 2, Group B

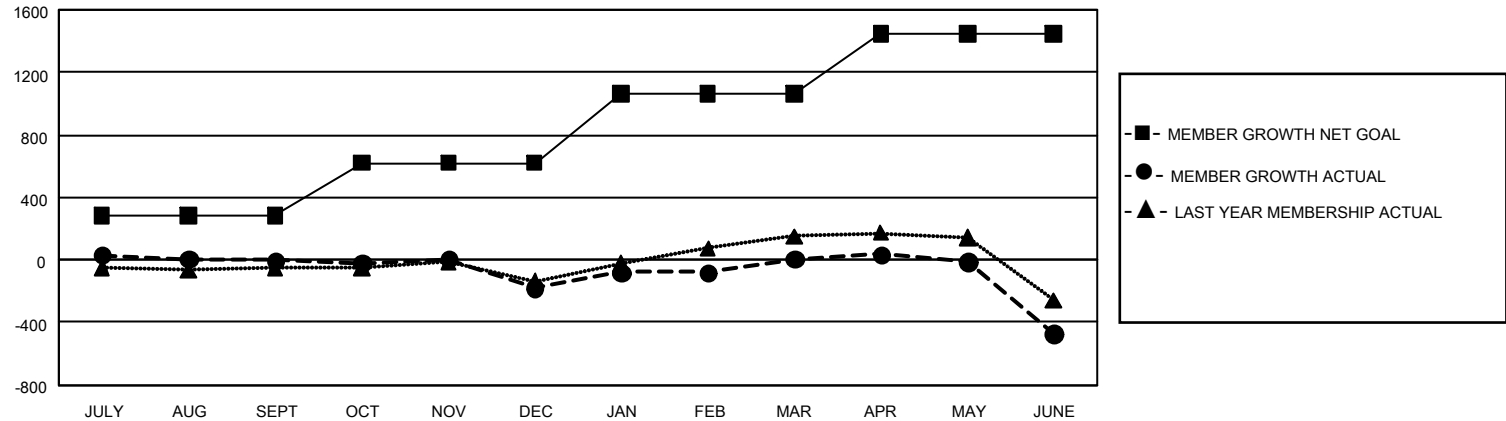
REPORT DOES NOT INCLUDE CLUBS IN UNDISTRICTED AREAS.

Clubs				Members			
RESULTS FOR 2024-2025				RESULTS FOR 2024-2025			
QUARTER	NEW CLUB GOAL	NEW CLUBS	DROPPED CLUBS	QUARTER	MEMBER GROWTH NET GOAL	MEMBER GROWTH ACTUAL	DROPPED MEMBERS ACTUAL (including transfers)
JULY/AUG/SEPT	9	0	1	JULY/AUG/SEPT	281	426	363
OCT/NOV/DEC	27	0	5	OCT/NOV/DEC	339	536	630
JAN/FEB/MAR	12	3	3	JAN/FEB/MAR	441	629	378
APR/MAY/JUNE	12	5	5	APR/MAY/JUNE	385	701	1,071

GOALS AND ACTUAL NEW CLUBS CUMULATIVE



GOALS AND ACTUAL MEMBERS CUMULATIVE



DROPPED CLUBS: 14	471 CLUBS OF 686 ADDED 1 OR MORE NEW MEMBERS	<u>GENDER DISTRIBUTION</u>	
<u>DROPPED MEMBERS</u>		MALE	9,424 (60.50%)
DECEASED 244	CLICK HERE FOR CUMULATIVE MEMBERSHIP DATA	FEMALE	6,144 (39.45%)
CLUB CANCELLED 94		NON BINARY	1 (0.01%)
OTHER 2,086		PREFER NOT TO ANSWER	7 (0.04%)
TOTAL 2,424		TOTAL FAMILY UNIT MEMBERS	2,862
		FAMILY MEMBERS PAYING HALF DUES	1,477